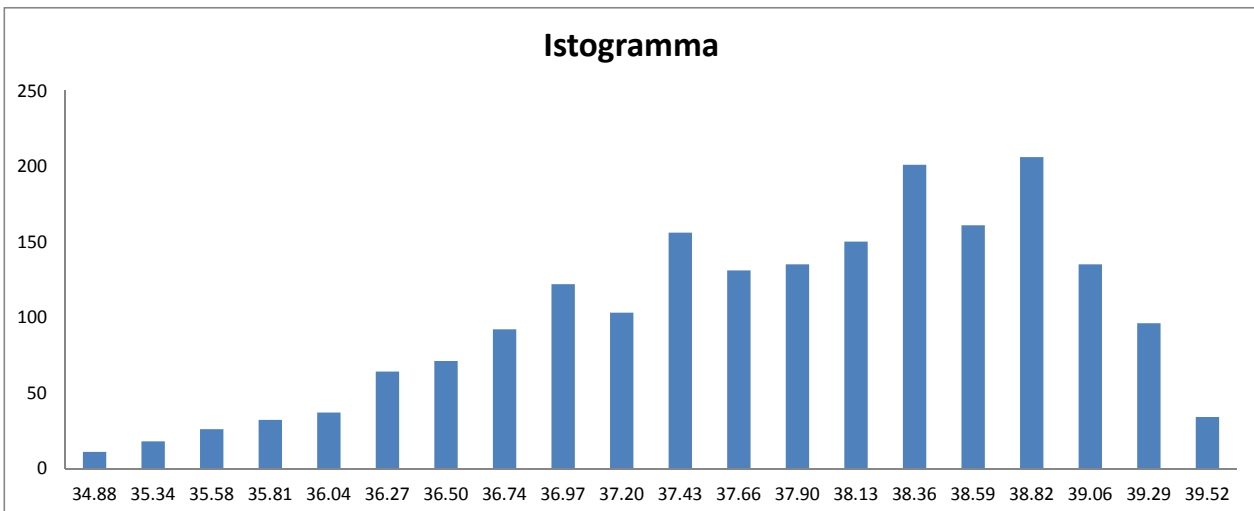
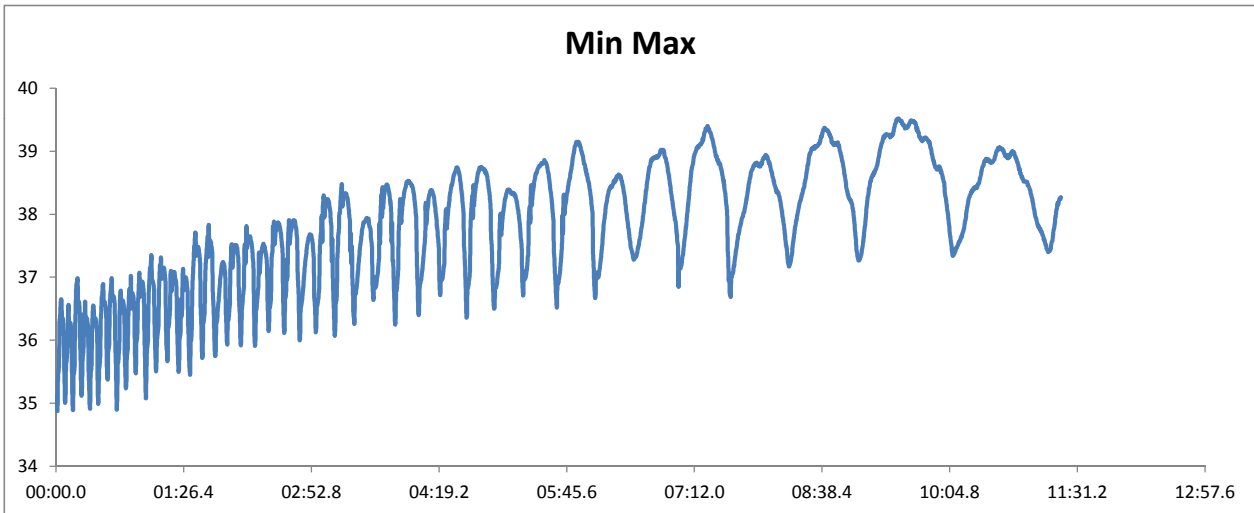
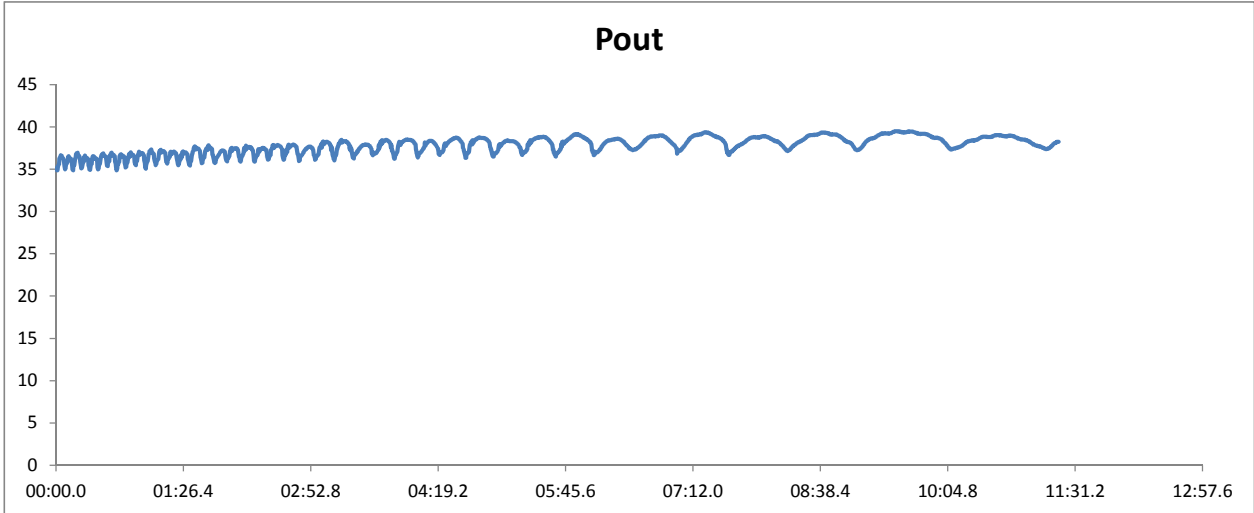


| | |
|------------------------|--------------------------|
| Modello Laser | C-30A |
| Serial Number RF | assente |
| Serial Number Sorgente | BTH-1139867.42038 |
| Sample Rate: | 2000 |
| Sample Period: | 00:00.3 |
| Total Duration: | 0:11:20 |
| | |
| | |

| | |
|---------------------|-------------------------|
| Data | 20/12/2012 10:10 |
| Sonda | 0164L12R |
| Frequenza | 25 KHz |
| Duty | 100 % |
| Valore Minimo | 35 W |
| Valore Medio | 38 W |
| Valore Massimo | 40 W |
| Deviazione Standard | 1.0 W |
| Stabilità | 5.31% +/- |



| PROCEDURA TEST LASER | | | | |
|---|---------------|---------------------------|-------------------|-------------------------|
| | | | NOTE | |
| MODELLO LASER | | C 30A - GEM 30A | | |
| SERIAL NUMBER | | BTH.1139867.42038 | | |
| | | | | |
| GRUPPO RF | | | | |
| SERIAL NUMBER | | | | |
| | | | | |
| TEMPO EMISSIONE LASER A FREDDO | | | | |
| 50KHZ | | T on = | | |
| 30KHZ - 25KHZ | | T on = 2uS a 25KHz | | |
| 1KHZ | | T on = 13uS | | |
| ESECUZIONE TEST | | | | |
| 50KHZ | 10 min | Pmin: | Pmax: | Stabilità: |
| 30KHZ - 25KHZ | 1 ora a 25KHz | Pmin: 34.7 W | Pmax: 40 W | Stabilità: 4,4 % |
| 1KHZ | 10 min | Pmin: 35.2 W | Pmax: 40 W | Stabilità: 4,9 % |
| VERIFICA ASSORBIMENTI E TENSIONI A PIENA POTENZA | | | | |
| 50KHZ | | I ass: | V1: | V2: |
| 30KHZ - 25KHZ | | I ass: 11 A | V1: | V2: |
| 1KHZ | | I ass: 11 A | V1: | V2: |
| TEMPO EMISSIONE LASER A CALDO | | | | |
| 50KHZ | | T on = | | |
| 30KHZ - 25KHZ | | T on = 2uS a 25KHz | | |
| 1KHZ | | T on = 11uS | | |
| TEST LINEARITA' POTENZA A FREQUENZA: KHz | | | | |
| 10 % | | T on = | Pmin: | Pmax: |
| 20 % | | T on = | Pmin: | Pmax: |
| 30 % | | T on = | Pmin: | Pmax: |
| 40 % | | T on = | Pmin: | Pmax: |
| 50 % | | T on = | Pmin: | Pmax: |
| 60 % | | T on = | Pmin: | Pmax: |
| 70 % | | T on = | Pmin: | Pmax: |
| 80 % | | T on = | Pmin: | Pmax: |
| 90 % | | T on = | Pmin: | Pmax: |
| 100 % | | T on = | Pmin: | Pmax: |
| VERIFICA FLUSSIMETRO | | | | |
| VERIFICA FLUSSO | | | | |
| CONTROLLO ANOMALIE | | | | |
| CONTROLLO DIMENSIONE SPOT A DISTANZA 180 - 600 - 800 - 3000 mm | | | | |
| FREQUENZA 50KHZ | | X : | Y: | |
| FREQUENZA 30KHZ - 25KHZ | | X : | Y: | |
| FREQUENZA 1KHZ | | X : 3.9 mm | Y: 3.8 mm | |
| VERIFICA PIN HOLE | | | | |
| DISTANZA | | 180 mm | | |
| DIAMETRO | | 3,3 mm | | |
| POTENZA RILEVATA | | 34,5W | | |

Collaudo eseguito da

